

TRAVELSLOVAKIA.SK

Sharing the real Slovakia with you since 2003



CONTENTS

Company profile	3
Basic facts and information	4
Wellness & Spa in Slovakia	5
Piešťany Spa	6
<i>Piešťany Spa facilities</i>	7
<i>Piešťany Spa hotels</i>	8
<i>Piešťany Spa stays</i>	10
<i>Piešťany Spa rates 2015/16</i>	13
Rajecké Teplice Spa	19
<i>Rajecké Teplice Spa facilities</i>	20
<i>Rajecké Teplice Spa hotels</i>	21
<i>Rajecké Teplice Spa stays</i>	22
<i>Rajecké Teplice Spa rates 2015</i>	24
Bojnice Spa	26
<i>Bojnice Spa facilities</i>	27
<i>Bojnice Spa stays</i>	28
<i>Bojnice Spa rates 2015</i>	29
Bardejov Spa	30
<i>Bardejov Spa facilities</i>	31
<i>Bardejov Spa hotels</i>	31
<i>Bardejov Spa stays</i>	32
<i>Bardejov Spa rates 2015</i>	33

Name: TRAVELSLOVAKIA.SK Ltd., Slovak Incoming Tour Operator

Established: 2003

Headquarters: Starohorská 14, 974 11 Banská Bystrica, The Slovak Republic

Phone: +421 905 594 240; +421 918 320 908

E-mail: barbora@travelslovakia.sk

lenka@travelslovakia.sk

travelslovakia@gmail.com

Internet: www.travelslovakia.sk

Our company TRAVELSLOVAKIA.SK Ltd. is an incoming tour operator located in Slovakia, managing holidays for groups and individual travellers from all over the world.

Our company TRAVELSLOVAKIA.SK Ltd. was established in 2003, when unit of young people realized their long-time dream and began to develop the brand new company, which would be able to make our beautiful Slovakia visible for foreigners.

We are efficient, flexible and willing to help. Our greatest advantage is that we are genuine Slovak people who are able to offer clients a truly authentic experience of Slovakia's unique countryside, heritage and culture.

Programmes and services:

- Accommodation (hotels in Bratislava, Slovak ski resorts and in other regions of the Slovak Republic)
- Individual tours
- Tailor made tours
- Escorted coach tours
- Self-guided tours
- Spa & Well-being programmes
- Ski holidays
- Central Europe tours (Prague, Vienna, Budapest, Krakow)
- Transfers
- Guide services & interpreter

BASIC FACTS & INFORMATION

Basic Facts

Name: The Slovak Republic

Area: 49035 km²

Population: 5 397 036

Capital: Bratislava

Currency: EURO (EUR)

Language: Slovak (a Slavic language)

Time: GMT + 1 (Summer time April - September: GMT + 2)

Geographical Position:

Slovakia is an inland state lying in the middle of Europe. The church of St. John in Kremnické Bane is considered to be the geographical centre of the continent. The shape of the territory is lengthened in a parallel direction. Slovakia has borders with Austria, Czech republic, Poland, Ukraine and Hungary.

Climate:

Slovakia is situated in the northern mild climate zone. The average temperature is 8 - 10°C .

Useful information

Entrance to the Slovak Republic and visas

The Slovak Republic is a member of the European Union since 2004.

There are different rules for citizens of other EU member countries than for tourists from other parts of the world. Citizens of EU member states need a passport or other ID document to enter the Slovak Republic. The same is valid for citizens of Switzerland, Norway, Iceland and Liechtenstein, who enjoy free movement around the EEA (European Economic Area).

Visitors from other countries require a passport with at least six months validity on the day of arrival and in some cases a visa. A list of states whose citizens require a visa to enter the Slovak Republic can be found on the Ministry of Foreign Affairs website.

The Slovak Republic entered the so-called Schengen zone in 2007. This group of countries have come together to enable people to cross their borders without passport controls. Despite this, a valid passport or other ID will still have to be carried at all times.

Insurance

Visitors from abroad are recommended to arrange their own insurance before travelling to the Slovak Republic. Mountain rescue insurance in Slovakia is obligatory. Insurance covers mountain rescue service costs on technical rescue securing or search action in the mountains. It is intended for Slovakian citizens, as well as other nationalities, who visit the mountains in Slovakia. Insurance can be arranged for one year or for a fixed number of days.

Health care

Medical treatment provided for a fee is stipulated by the appropriate Slovak regulations or by international agreements made between the government of the respective state and that of the Slovak Republic.

Voltage, sockets, and plugs

220 V, European norm, three-pole earthed plugs have two pins and a hole in the plug and one pin with two holes in the socket.

Public holidays

1 January - Day of the Establishment of the Slovak Republic

6 January - Epiphany (The Three Magi and Christmas Day of Orthodox Christians)

March, April - Good Friday

March, April - Easter Monday

1 May - International Workers' Day
8 May - Day of victory over fascism
5 July - St. Cyril and Methodius Day
29 August - Slovak National Uprising anniversary
15 September - Day of Blessed Virgin Mary, patron saint of Slovakia
1 November - All Saints' Day
17 November - Struggle for Freedom and Democracy Day
24 December - Christmas Eve
25 December - Christmas Day
26 December - St. Stephen's Day

Opening hours of museums, galleries, castles and chateaux

Monday: Closed

Tuesday - Sunday: 09:00 a.m. - 5:00 p.m.

Most castles are closed during state holidays and from November to March.

Typical products and souvenirs

The usual souvenirs, such as magnets, book markers, postcards and calendars with images of Slovakia's beautiful sights, can be found in many souvenir shops and tourist information offices across the country. Dolls wearing traditional folk costumes are among Traditional Slovak pottery, majolika or keramika in Slovak, can be interesting for tourists as well. Decorated Easter eggs, called kraslice in Slovak, make a rather fragile but lovely souvenir from Slovakia too. Many kinds of traditional souvenirs can be purchased in shops branded as ÚĽUV - The Centre for Folk Art Production.



WELLNESS & SPA IN SLOVAKIA

Slovakia is a country blessed with an unbelievable underground wealth bubbling up to the surface from the countless mineral springs in stunning nature in every corner of the country, boasting healing powers and beneficial effects on the human organism. These places were destined to become the sites of well-known health spas, which thanks to their disease-treating powers and health-giving properties have been regarded as miraculous and remarkable since time immemorial. Their healing waters combined with a wide range of procedures treat the sick and regenerate the weak. Thanks to the use of specialised modern therapeutic procedures, professional healthcare under the supervision of qualified experts, unique natural sources in combination with exceptionally pure air, Slovakia enjoys the role of a much sought-after spa destination.

You will discover the numerous opportunities that spas provide for a much needed rest, regaining strength or for finding new energy, relaxing and alleviating health problems, or simply for enjoying a pleasant long weekend in the company of your loved ones. That's not all. The special atmosphere of Slovak spas is also enhanced by their unique surroundings, with many opportunities to spend your free time being active or taking in some culture.



PIEŠŤANY SPA

The Slovak Health Spa Piešťany has belonged to the leading European spas for more than 100 years for its treatment of rheumatism, rehabilitation of the locomotor system and the nervous system.

Natural healing sources - **thermal mineral water and unique sulphuric mud** - are the cornerstones of the Piešťany spa, which has become world-famous thanks to its modern methods of treating rheumatism and other locomotive disorders. Spa Piešťany is located on beautiful Spa Island, which has a luxurious park, rich cultural and social life and numerous possibilities for active relaxation. Spa Island is an oasis of peace and relaxation, but also of recovery through active sport.

Each of the internationally-recognized 2-5-star spa hotels offers its own rehabilitation centre. The Social Centre, 9-hole course and outdoor thermal swimming pool "Eva" with tennis courts and beach volleyball courts offer additional opportunities. The beautiful park is ideal for walks, and many cafés and restaurants offer local and international specialties.



PIEŠŤANY SPA FACILITIES

Danubius Health Spa Irma

Luxurious spa house with a unique mud pool is built directly on the healing springs. Over 60 medical and spa treatments are provided in here. The spa house is directly connected with hotel Thermia Palace****.



Danubius Health Spa Balnea

New and modern health spa providing treatments with high quality medical approach. Treatments are based on natural healing resources as thermal mineral water and sulphur mud. The spa house is directly connected with Spa Resort Esplanade**** and Spa Hotel Splendid***. The spa house was completely reconstructed in 2014.



Danubius Health Spa Napoleon

The oldest health spa complex of three spa houses built in classicist style. The buildings together form a small square. Mirror pool and salt cave are located in this complex.



Danubius Health Spa Pro Patria

Treatments are provided in historical area. The mud kitchen in Danubius Health Spa Pro Patria operates on the basis of original and well-established technological methods since 1916. The spa is directly connected with the Spa Hotel Pro Patria**.



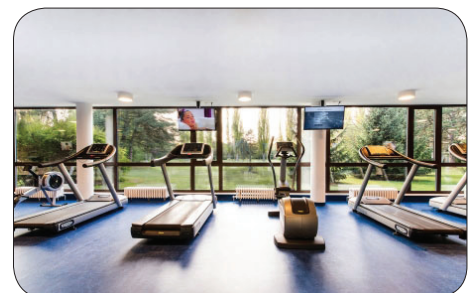
Emporium Wellness & Beauty

Beauty center located in Irma Health Spa. You can spoil yourself with first class beauty and relaxation treatments (facial treatments, for men, body treatments).

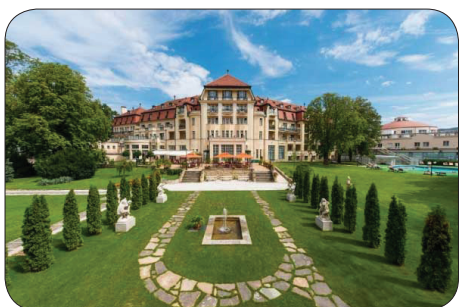


Danubius Premier Fitness

Fully equipped fitness centers with saunas (steam and Finnish) and swimming and relaxing pool.



PIEŠŤANY SPA HOTELS

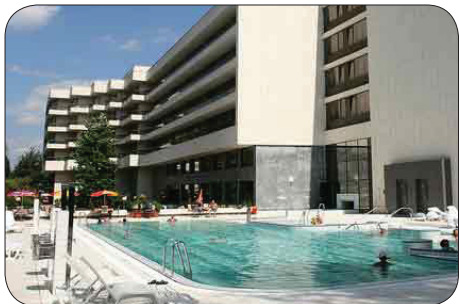


[Spa Resort Thermia Palace*****](#)

Beautifully renovated Art-Nouveau hotel built in 1912 and nestled in the picturesque environment of Spa Island, directly connected to the Irma Health Spa. Located on the site of thermal springs and healing mud, close to the Colonnade Bridge linking Spa Island to the town of Piešťany. Hotel offers 111 luxurious, air-conditioned rooms including 15 suites and rooms with disabled access, equipped with bathroom, flat-screen TV, Internet, safe deposit box, two telephones, tea and coffee set, bathrobe, hair dryer.



Grand Restaurant serves specialties of international as well as traditional Slovak cuisine, vegetarian dishes, low-fat meals, and food associated with a healthy diet. Café Alexander with summer terrace offers high quality drinks. Irma Health Spa provides treatments with unique healing thermal mineral water and curative sulphuric mud, regeneration and relaxation treatments. Fitness centre, sauna. Emporium Wellness & Beauty: cosmetic treatments, massages, manicures, pedicures, hairdresser.



[Spa Resort Esplanade****](#)

Modern hotel complex located in the park area in the centre of Spa Island. Directly connected by corridor to the impressive Balnea Health Spa, which offers a wide range of unique therapeutic and relaxation treatments. Hotel offers 455 rooms, including 21 suites and rooms with disabled access with either balcony or French doors, bathroom, TV, WiFi, telephone, minibar, bathrobe and hair dryer.



Orchidea, Fresia, Rosa, Calla, Seasons Dine & Grill, Lilium restaurants - all of them offer a variety of International and Slovak specialties. Within the Danubius Healthy Choice an assortment of healthy, light dishes and organic food is offered.

Retro bar, Poolside bar and Park Café are another places to rest or enjoy live music. Explore the exciting Water and Sauna World, featuring an indoor/outdoor pool with water attractions, Finnish sauna, infra sauna, steam bath, solarium and relaxation room.



[Spa Hotel Splendid***](#)

Modern hotel complex set among century-old trees on Spa Island only a few metres from the golf course. Directly connected by corridor to the impressive Balnea Health Spa, which offers a wide range of unique therapeutic and relaxation treatments. Hotel offers 303 rooms, including 19 suites with balcony, bathroom, TV, telephone, refrigerator, safe deposit box, hair dryer and bathrobe. Vienna, Prague, Budapest and Bratislava Restaurants – beside the usual selection of Slovak and International cuisine, special dietary program is available. A la Carte Berlin Restaurant with a summer terrace offers a pleasant atmosphere with a selection of modern gastronomic dishes from Slovak and International cuisines, and monthly seasonal specialties. Café Splendid with a summer terrace serves a wide variety of drinks, desserts and sweet dishes, summer terrace with live music.



Indoor and outdoor thermal swimming pool, indoor pool equipped with whirlpools. Complete medical section - Balnea Health Spa - providing more than 60 treatments. Dental studio and beauty salon in the Congress Centre. Free WiFi in hotel public areas.

PIEŠŤANY SPA HOTELS

Vila Trajan***

Lies very close to the pedestrian area of Piešťany and conveniently situated just a few steps from the spa. Cosy premises offer 27 rooms including 1 suite with bathroom, TV, balcony, refrigerator, safe deposit box, telephone, hair dryer upon request.

A la carte Restaurant and Café Excelsior are located in hotel Jalta, Café Espresso in Vila Trajan. Both cafés have summer terraces. Breakfast is served in-house, lunch and dinner at nearby hotel Jalta.

Spa physician consulting rooms are in Hotel Jalta. Curative healing treatments with unique healing thermal mineral water and sulphuric mud, and regeneration and relaxation treatments are provided in the Napoleon Health Spa on Spa Island (300 m away).



Hotel Jalta**

Located very close to the pedestrian area of Piešťany and conveniently situated just a few steps from the spa. Hotel offers 58 rooms, including 5 suites with bathroom, TV, balcony, refrigerator, safe deposit box, telephone, hair dryer upon request.

A la carte Restaurant serves local and foreign dishes accompanied by vegetarian meals, dietary and senior's meals, and a rich salad offer. Café Excelsior is perfect for a rest with coffee in the cocktail lounge with its summer terrace.

Spa physician consulting rooms are in the hotel itself. Curative healing treatments with unique healing thermal mineral water and sulphuric mud, and regeneration and relaxation treatments are provided in the Napoleon Health Spa on Spa Island (300 m away).



Spa Hotel Pro Patria**

Beautifully restored period spa hotel from 1916 located in the centre of Spa Island.

Barrier-free access to treatment rooms in the hotel or nearby Napoleon Health Spa.

Hotel offers 104 rooms including rooms with disabled access with bathroom, radio, TV, telephone, hairdryer upon request.

Franz Josef Café with summer terrace provides wide variety of drinks and desserts. VIVO lounge offers wine, beer and Slovak specialities.

Treatments with unique healing thermal mineral water and curative sulphuric mud, revitalisation and relaxation treatments.

Services - hair studio, cosmetic studio, natural solarium. Nearby -swimming pool Eva. Permanent exhibition of the Balneological Museum in the hotel.



PIEŠŤANY SPA STAYS

Traditional Spa Stay Light

This spa stay is intended for the treatment of rheumatoid arthritis and the musculoskeletal system, with a recommended stay of 2 weeks (min. 7 nights).

- Accommodation with full board - buffet breakfast, lunch, dinner; special diet in case of osteoporosis indication.
- Doctor and health examinations (initial and final) with a special emphasis on disorders of the musculoskeletal system and related complications.
- Doctor's visit once per week.
- Diagnostics and laboratory tests with doctor's prescription - for stays with a minimum duration 13 nights.
- Medical report at the end of the stay.
- Healing treatments: individual therapeutic program with up to 12 treatments per week (7 nights), based on the guest's health and doctor's prescription. The program includes 3 active rehabilitation treatments per week, such as group exercises or fitness training with a fitness trainer.

Traditional Spa Stay

This spa stay is intended for the treatment of rheumatoid arthritis and the musculoskeletal system, with a recommended stay of 2 - 3 weeks (min. 7 nights).

- Accommodation with full board - buffet breakfast, lunch, dinner; special diet in case of osteoporosis indication.
- Doctor and health examinations (initial and final) with a special emphasis on disorders of the musculoskeletal system and related complications.
- Doctor's visit once per week.
- Diagnostics and laboratory tests with doctor's prescription - for stay with a minimum duration of 13 nights.
- Medical report at the end of the stay.
- Healing treatments: individual therapeutic program with up to 24 treatments per week (7 nights), based on the guest's health and doctor's prescription. The program includes 4 active rehabilitation treatments per week, such as group exercises or fitness training with a fitness trainer.

The doctors prescribe treatments for all Traditional spa stays, selecting from following groups:

- Group 1 - max 6 per week: Individual thermal mineral bath, Local mud pack, Mud pool, Thermal bath - Mirror pool, Individual bubble bath, Peloidtherapy, Carbon dioxide thermal bath, Hydromassage, Underwater jet massage, Underwater traction
- Group 2 - max 3 per week: Traction, Antispastic kinezitherapy, Scottish spray, Whirlpool, Stepping bath, Carbon insufflations, Inhalation, Aqua cycling, Electrotherapy, Ergotherapy, Mechanotherapy, Laser therapy, Bioptron lamp, Local cryotherapy, Repuls, Rehabilitation path, Verticalisation, Prissnitz's packs, Paraffin for hands, Psychotherapy
- Group 3 - max 2 per week: Individual therapeutic exercise, Soft techniques, Segment reflex massage, Individual sling exercise therapy, Partial medical massage, Parafango pack, Paraffin pack



PIEŠŤANY SPA STAYS

Healthcare and Wellbeing

The aim of the package is healthy life style, selfresponsibility for your health and wellbeing under profesional medical supervision (min. 4 nights).

- Accommodation with full board - buffet breakfast, lunch and dinner.
- Doctor's Consultation, Consultation with a fitness trainer, Individual fitness plan.
- Beauty treatments: up to 3 treatments per week (7 nights).

Treatments are selected from below: 1x Complete facial treatment or Piešťany Facial Mud Pack, 1x Manicure or Pedicure, 1x Hot stone therapy or Twiggy's Slimline massage.

• Healing treatments: individual program based on guest's health and doctor's prescription which includes up to 15 treatments per week (7 nights). The program includes 3 active rehabilitation treatments per week such as group exercises or fitness training with fitness trainer.

Treatments are selected from below: Thermal bath (Mirror pool), Mud pool, Individual thermal mineral bath, Local mud pack (1x per week), Group therapeutic exercise, Partial medical massage (2x per week), Traction, Electrotherapy, Aqua cycling, Nordic walking, Oxygen inhalation, Carbon therapy, Herbal Bath by Kneipp, Salt cave, Whirlpool, Hydromassage, Relaxing head and face massage, Foot reflex massage.

Weight Loss Program

This spa stay is aimed at the treatment of musculoskeletal system damaged by being overweight, on weight reduction and on Nutrition Balance with recommended length of stay 3 - 4 weeks (min. 13 nights).

- Accommodation with full board - special reduction diet - individual diet low on saccharides, with sufficient intake of proteins, low on fats and rich in fluid and vitamin supply; mostly light, low-calorie meals from poultry, fish and white meats, with high content of vegetables, fibres and vitamins, enriched by natural nutritional supplements and a drinking cure.
- Doctor and health examinations (initial and final) with special emphasis on symptoms of obesity and related complications; localization of body fat; individual food intake regime; consultation with a dietary assistant.
- Consultation with a fitness trainer
- BMI and WHR check-up, Diagnostics and laboratory tests.
- Medical report at the end of the stay.
- Healing treatments - individual therapeutic program with up to 24 treatments per week (7 nights) based on guest's health and doctor's prescription.

Treatments are selected from below: Thermal bath -Mirror pool, Mud pool, Individual thermal mineral bath, Mud pack (2x per week), Group therapeutic exercise (daily), Whirlpool, Hydromassage, Underwater jet massage, Partial medical massage, Individual therapeutic exercise (2x per week) or Soft techniques with Ortho-Biomic Method (max 1 per week), Nordic walking, Scottish spray, Stepping bath, Carbon therapy (max 2x per week), Electrotherapy, Fitness training with fitness trainer (daily), Traction.

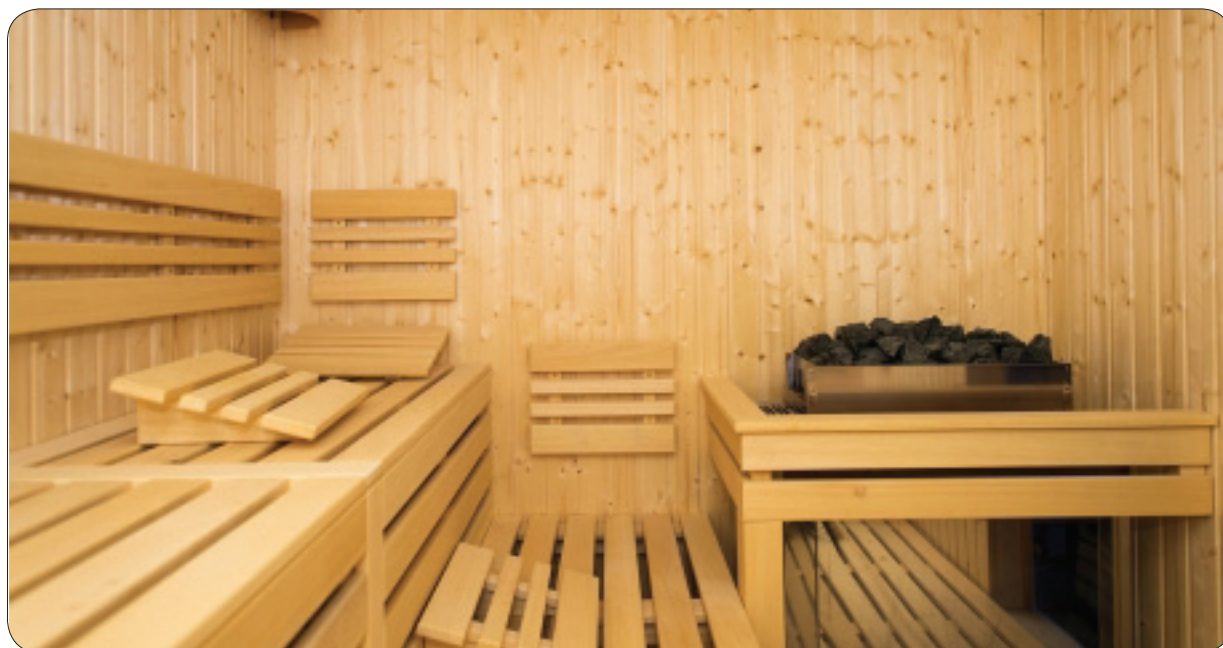


PIEŠŤANY SPA STAYS

Taste of Piešťany

This spa stay is aimed at enjoying and tasting the unique treatments of Spa Piešťany (2 - 7 nights).

- Accommodation with half board - buffet breakfast, dinner.
- Medical consultation.
- Healing treatments - relaxation program, including treatments detailed below:
 - *2 nights: 1x Thermal bath - Mirror pool, 1x Local mud pack, 1x Partial medical massage
 - *3 nights: 1x Thermal bath - Mirror pool, 1x Local mud pack, 1x Partial medical massage, 1x Hydrotherapy
 - *4 nights: 1x Thermal bath - Mirror pool, 1x Local mud pack, 1x Partial medical massage, 1x Hydrotherapy, 1x Salt cave, 1x Nordic walking/ Group therapeutic exercise
 - *5 nights: 2x Thermal bath - Mirror pool, 1x Local mud pack, 2x Partial medical massage, 1x Hydrotherapy, 1x Salt cave, 1x Nordic walking/ Group therapeutic exercise
 - *6 nights: 2x Thermal bath - Mirror pool, 1x Local mud pack, 2x Partial medical massage, 1x Hydrotherapy, 1x Saltcave, 2x Nordic walking/ Group therapeutic exercise
 - *7 nights: 2x Thermal bath - Mirror pool, 1x Local mud pack, 2x Partial medical massage, 3x Hydrotherapy, 1x Salt cave, 2x Nordic walking/ Group therapeutic exercise



Senior Active Week

This spa stay is recommended for seniors to regenerate their body with a stay of 1 week (7 nights).

- Accommodation with half board - buffet breakfast, dinner and 2 vitamin drinks per day.
- Doctor's and health examinations (initial and final), ECG test
- Healing treatments - individual therapeutic program with up to 12 treatments per week (7 nights) based on guest's health and doctor's prescription. The program includes 4 active rehabilitation treatments per week, including group exercises or fitness training with trainer.

Treatments are selected from below: Carbon dioxide thermal bath, Local mud pack or Parafango (1 per week), Paraffin, Thermal bath - Mirror pool or Individual Thermal mineral bath, Salt cave, Whirling bath, Stepping bath, Partial medical massage, Dry carbon gas bath.

PIEŠŤANY SPA RATES 2015/16

DANUBIUS HEALTH SPA RESORT THERMIA PALACE *****

	TRADITIONAL SPA STAY			TRADITIONAL SPA STAY LIGHT			WEIGHT LOSS PROGRAM			PREVENTIVE SPA STAY		
	Out	Season	Top	Out	Season	Top	Out	Season	Top	Out	Season	Top
Person in EUR/night												
Double Comfort	130	145	160	125	140	155	150	165	180	130	145	160
Single Comfort	160	185	210	155	180	205	180	205	230	160	185	210
Double Deluxe	145	160	180	140	155	175	165	180	200	145	160	180
Single Deluxe	175	200	230	170	195	225	195	210	250	175	200	230
Suite	165	190	215	160	185	210	185	215	235	165	190	215
Suite (1 person)	255	300	345	250	295	340	275	320	365	255	300	345
Suite Deluxe	200	225	250	195	220	245	220	245	270	200	225	250
Suite Deluxe (1 person)	305	350	405	300	345	400	325	370	425	305	350	405
Extra bed	130	145	160	125	140	155	150	165	180	130	145	160

	TASTE OF PIEŠŤANY			SENIOR ACTIVE WEEK			ACCOMMODATION WITH BREAKFAST		
	Out	Season	Top	Out	Season	Top	Out	Season	Top
Person in EUR/night									
Double Comfort	115	130	145	110	125	140	85	100	115
Single Comfort	145	170	195	140	165	190	135	160	185
Double Deluxe	130	145	165	125	140	160	100	115	135
Single Deluxe	160	185	215	155	180	210	150	175	205
Suite	150	175	200	145	170	195	120	145	170
Suite (1 person)	240	285	330	235	280	325	230	275	320
Suite Deluxe	185	210	235	180	205	230	155	180	205
Suite Deluxe (1 person)	290	335	390	285	330	385	280	325	380
Extra bed	115	130	145	110	125	140	85	100	115

Out of season:

05.01. - 01.03.2015
23.11. - 25.12.2015
11.01. - 28.02.2016

Season:

02.03. - 29.03.2015
12.10. - 22.11.2015
29.02. - 20.03.2016

Top season:

30.03. - 11.10.2015
26.12.2015 - 10.01.2016
21.03. - 10.04.2016

Free services:

- bottle of mineral water in the room daily
- "Tea at Five" (tea and cookies offer)
- WiFi connection
- Danubius Premier Fitness with swimming pool

Surcharges:

Local tax 1,10 EUR/person, night
Christmas surcharge 50 EUR/ person
New Year surcharge 125 EUR/person

Discounts:

21 = 19 nights, 28 = 25 nights

PIEŠŤANY SPA RATES 2015/16

DANUBIUS HEALTH SPA RESORT ESPLANADE ****

	TRADITIONAL SPA STAY			TRADITIONAL SPA STAY LIGHT			WEIGHT LOSS PROGRAM			PREVENTIVE SPA STAY		
	Out	Season	Top	Out	Season	Top	Out	Season	Top	Out	Season	Top
Person in EUR/night												
ESPLANADE WING												
Double Comfort	97	105	117	92	100	112	117	125	137	97	105	117
Single Comfort	115	123	135	110	118	130	135	143	155	115	123	135
Double Superior	107	115	132	102	110	127	127	135	152	107	115	132
Single Superior	125	133	150	120	128	145	145	153	170	125	133	150
Double Superior Plus	117	125	147	112	120	142	137	145	167	117	125	147
Single Superior Plus	160	178	220	155	173	215	180	198	240	160	178	220
Double Panorama	117	125	147	112	120	142	137	145	167	117	125	147
Single Panorama	135	153	195	130	148	190	155	173	215	135	153	195
Suite	137	145	167	132	140	162	157	165	187	137	145	167
Suite (1 person)	190	208	250	185	203	245	210	228	270	190	208	250
Suite Superior	147	155	177	142	150	172	167	175	197	147	155	177
Suite Superior (1 person)	210	228	270	205	223	265	230	248	290	210	228	270
Presidential suite	197	215	237	192	210	232	217	235	257	197	215	237
Presidential suite (1 person)	285	313	355	280	308	350	305	333	375	285	313	355
Extra bed	97	105	117	92	100	112	117	125	137	97	105	117
PALACE WING												
Double Standard	95	103	115	90	98	110	115	123	135	95	103	115
Single Standard	113	121	133	108	116	128	133	141	153	113	121	133
Double Superior	105	113	130	100	108	125	125	133	150	105	113	130
Single Superior	123	131	148	118	126	143	143	151	168	123	131	148
Junior suite	127	135	157	122	130	152	147	155	177	127	135	157
Junior suite (1 person)	170	188	230	165	183	225	190	208	250	170	188	230
Extra bed	95	103	115	90	98	110	115	123	135	95	103	115

Out of season:

30.11. - 25.12.2015

04.01. - 06.03.2016

Season:

13.04. - 03.05.2015

12.10. - 29.11.2015

07.03. - 10.04.2016

Top season:

04.05. - 11.10.2015

26.12.2015 - 03.01.2016

PIEŠŤANY SPA RATES 2015/16

	TASTE OF PIEŠŤANY			ACTIVE WEEK SENIOR			ACCOMMODATION WITH BREAKFAST		
	Out	Season	Top	Out	Season	Top	Out	Season	Top
Person in EUR/night									
ESPLANADE WING									
Double Comfort	87	95	107	82	90	102	67	75	87
Single Comfort	105	113	125	100	108	120	85	93	105
Double Superior	97	105	122	92	100	117	77	85	102
Single Superior	115	123	140	110	118	135	95	103	120
Double Superior Plus	107	115	137	102	110	132	87	95	117
Single Superior Plus	150	168	210	145	163	205	130	148	190
Double Panorama	107	115	137	102	110	132	87	95	117
Single Panorama	125	143	185	120	138	180	105	123	165
Suite	127	135	157	122	130	152	107	115	137
Suite (1 person)	180	198	240	175	193	235	160	178	220
Suite Superior	137	145	167	132	140	162	117	125	147
Suite Superior (1 person)	200	218	260	195	213	255	180	198	240
Presidential suite	187	205	227	182	200	222	167	185	207
Presidential suite (1 person)	275	303	345	270	298	340	255	283	325
Extra bed	87	95	107	82	90	102	67	75	87
PALACE WING									
Double Standard	85	93	105	80	88	100	65	73	85
Single Standard	103	111	123	98	106	118	83	91	103
Double Superior	95	103	120	90	98	115	75	83	100
Single Superior	113	121	138	108	116	133	93	101	118
Junior suite	117	125	147	112	120	142	97	105	127
Junior suite (1 person)	160	178	220	155	173	215	140	158	200
Extra bed	85	93	105	80	88	100	65	73	85

Free services:

- WiFi connection
- Water and Sauna World
- Danubius Premier Fitness with swimming pool

Surcharges:

- Local tax 1,10 EUR/person, night
- Christmas surcharge 35 EUR/ person
- New Year surcharge 95 EUR/person

Discounts:

- 21 = 19 nights, 28 = 25 nights

PIEŠŤANY SPA RATES 2015/16

SPA HOTEL SPLENDID ***

	TRADITIONAL SPA STAY			TRADITIONAL SPA STAY LIGHT			WEIGHT LOSS PROGRAM			PREVENTIVE SPA STAY		
	Out	Season	Top	Out	Season	Top	Out	Season	Top	Out	Season	Top
Person in EUR/night												
GRAND WING												
Double Standard	73	78	85	68	73	80	83	88	95	73	78	85
Single Standard	89	94	101	84	89	96	99	104	111	89	94	101
Suite	90	99	111	85	94	106	100	109	121	90	99	111
Suite (1 person)	122	135	152	117	130	147	132	145	162	122	135	152
Suite Comfort	96	105	117	91	100	112	106	115	127	96	105	117
Suite Comfort (1 person)	134	147	164	129	142	159	144	157	174	134	147	164
SPLENDID WING												
Double Comfort	82	87	97	77	82	92	92	97	107	82	87	97
Single Comfort	98	103	113	93	98	108	108	113	123	98	103	113
Suite	108	118	133	103	113	128	118	128	143	108	118	133
Suite (1 person)	154	1969	189	149	164	184	164	179	199	154	169	189
Extra bed	73	78	85	68	73	80	83	88	95	73	78	85

	TASTE OF PIEŠŤANY			ACTIVE WEEK SENIOR			ACCOMMODATION WITH BREAKFAST		
	Out	Season	Top	Out	Season	Top	Out	Season	Top
Person in EUR/night									
GRAND WING									
Double Standard	58	63	70	51	56	63	40	45	52
Single Standard	74	79	86	67	72	79	56	61	68
Suite	75	84	96	68	77	89	57	66	78
Suite (1 person)	107	120	137	100	113	130	89	102	119
Suite Comfort	81	90	102	74	83	95	63	72	84
Suite Comfort (1 person)	119	132	149	112	125	142	101	114	131
SPLENDID WING									
Double Comfort	67	72	82	60	65	75	49	54	64
Single Comfort	83	88	98	76	81	91	65	70	80
Suite	93	103	118	86	96	111	75	85	100
Suite (1 person)	139	154	174	132	147	167	121	136	156
Extra bed	58	63	70	51	56	63	40	45	52

Out of season:

19.12. - 25.12.2015
04.01. - 06.03.2016

Season:

13.04. - 03.05.2015
12.10. - 28.11.2015
07.03. - 10.04.2016

Top season:

04.05. - 11.10.2015
26.12.2015 - 3.1.2016

Free services:

- WiFi connection
- Danubius Premier Fitness swimming pool

Surcharges:

- Local tax 1,10 EUR/person, night
- Christmas surcharge 29 EUR/ person
- New Year surcharge 75 EUR/person

Discounts:

21 = 19 nights, 28 = 25 nights

PIEŠŤANY SPA RATES 2015/16

VILA TRAJAN ***

	TRADITIONAL SPA STAY		TRADITIONAL SPA STAY LIGHT		TASTE OF PIEŠŤANY		ACTIVE WEEK SENIOR		ACCOMMODATION WITH BREAKFAST	
	Out	Top	Out	Top	Out	Top	Out	Top	Out	Top
Person in EUR/night	Out	Top	Out	Top	Out	Top	Out	Top	Out	Top
Double Standard	64	72	59	67	51	59	47	55	34	42
Single Standard	74	82	69	77	61	69	57	65	44	52
Double Comfort	70	80	65	75	57	67	53	63	40	50
Single Comfort	80	90	75	85	67	77	63	73	50	60
Suite	80	92	75	87	67	79	63	75	50	62
Suite (1 person)	90	102	85	97	77	89	73	85	60	72
Extra bed	64	72	59	67	51	59	47	55	34	42

Out of season:

19.10. - 19.12.2015

02.03. - 10.04.2016

Top season:

13.04. - 18.10.2015

Free services:

- welcome drink

- Danubius Health Spa Napoleon

fitness center

Discounts:

14=13 nights

21 = 19 nights

28 = 25 nights

HOTEL JALTA **

	TRADITIONAL SPA STAY		TRADITIONAL SPA STAY LIGHT		TASTE OF PIEŠŤANY		ACTIVE WEEK SENIOR		ACCOMMODATION WITH BREAKFAST	
	Out	Top	Out	Top	Out	Top	Out	Top	Out	Top
Person in EUR/night	Out	Top	Out	Top	Out	Top	Out	Top	Out	Top
Double Economy	56	61	51	56	45	50	42	47	22	27
Single Economy	66	71	61	66	55	60	52	57	32	37
Double Standard	61	66	56	61	50	55	47	52	27	32
Single Standard	71	76	66	71	60	65	57	62	37	42
Suite	69	76	64	71	58	65	55	62	35	42
Suite (1 person)	88	96	83	91	77	85	74	82	54	62
Extra bed	61	66	56	61	50	55	47	52	27	32

Out of season:

19.10. - 19.12.2015

09.01. - 20.03.2016

Top season:

13.04. - 18.10.2015

21.03. - 10.04.2016

Free services:

- welcome drink

- Danubius Health Spa Napoleon

fitness center

Discounts:

14=13 nights

21 = 19 nights

28 = 25 nights

PIEŠŤANY SPA RATES 2015/16

SPA HOTEL PRO PATRIA **

Person in EUR/night	TRADITIONAL SPA STAY ALL INCLUSIVE		ACCOMMODATION ALL INCLUSIVE	
	Out	Top	Out	Top
Double Economy	61	69	49	57
Single Economy	67	75	55	63
Double Standard	69	77	57	65
Single Standard	75	83	63	71
Double Comfort	75	83	63	71
Single Comfort	81	89	69	77
Extra bed	69	77	57	65

Out of season:

13.04. - 30.05.2015

18.10. - 08.11.2015

02.03. - 10.04.2016

Top season:

31.05. - 17.10.2015

Free services:

- welcome drink
- Danubius Health Spa Napoleon fitness center

Discounts:

14=13 nights

21 = 19 nights

28 = 25 nights



RAJECKÉ TEPLICE SPA

The Rajecké Teplice Spa has a very rich history dating back to the 14th century. Rajecké Teplice Spa is situated in the north-western Slovakia, near Žilina town. Extensive parks, that pass in deciduous and coniferous forest parks and forests, give Rajecké Teplice Spa special charm. **Thermal springs of acratoteriem type with a 38°C thermal water** are used in the balneology centre at the Aphrodite Spa House to treat inflammatory and degenerative diseases of the movement apparatus, joints, spine, neurological diseases and occupational diseases. The Spa House has become a magnet attracting both domestic and foreign visitors with its indoor areas decorated in ancient style, giving it a particular atmosphere of peace and luxury. The balneology centre equipped with the state-of-the-art diagnostic and therapeutic devices offers a complete range of procedures aimed at therapeutic, relaxation and beauty effects: water treatment, classical massages, Scottish shower, oxygen therapy, carbon bath, manicure and pedicure.



RAJECKÉ TEPLICE SPA FACILITIES

Beauty Aphrodite

New beauty studio offers a wide range of procedures pampering your face, body and lymphic system. Treat yourself by gold mask, aloe vera therapy, lifting, lymphic drainage, lipomassage, solarium and much more.



Sauna World and Water World

Water world offers relax in various indoor and outdoor pools with thermal healing water. Pleasant atmosphere is completed by a grandiose antique architecture of the surrounding environment in which the pools are located.

The spa provides a complex of sauna facilities and steam baths located in beautiful environment of oriental style.



RAJECKÉ TEPLICE SPA HOTELS

Hotel Aphrodite Palace****

New luxury hotel opened in April 2014. The hotel has an accurate location, right in the center of the spa town. It offers its guests 111 rooms in various categories. The rooms are equipped with bathroom, direct telephone line, SAT TV, radio, refrigerator, bathrobe and slippers, some of the rooms have air-condition. Restaurant and lobby, decorated with marble, onyx and 24-carat gold, are dominating the new hotel. New trends of the international gastronomy as well as the traditional domestic specialties are being prepared here. Hotel Aphrodite Palce is connected with hotel Aphrodite, the Spa center and outdoor and indoor Water world with a glass bridge.



Hotel Aphrodite****

Unique combination of comfortable accommodation and procedures available under one roof. Its interior is designed in antic style contributing to the atmosphere of comfort and luxury. There are 47 rooms, 8 suites and 4 double rooms Comfort (smaller rooms) with total accommodation capacity 89 beds. Each room is equipped with telephone, minibar, TV-SAT, radio, refrigerator, bathroom with toilet, WiFi, most of hotel rooms are air-conditioned. Hotel offers luxury treatments, Beauty center Aphrodite and a stylish café. Balneological centre is equiped with modern spa technology and offers wide range of curative, relaxation, beautifying procedures.



Hotel Malá Fatra***

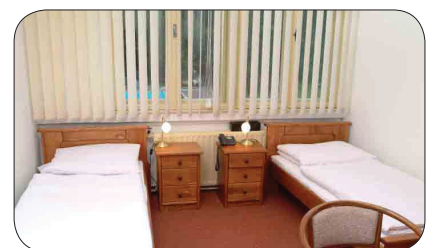
Hospitable accommodation facility situated in the park, close to the Spa house Aphrodite with balneological centre. There are available 26 single and double rooms. Each room is equiped with telephone, TV-SAT, radio, refrigerator, bathroom with toilet. Hotel Malá Fatra offers food service in restaurant with summer terrace.



Hotel Laura***

Hotel Laura is situated directly in the area of an outdoor swimming pool. Accommodated guests have free entry to swimming pool. There are available 18 single and double rooms and 2 double rooms de Lux.

Rooms are equiped with telephone, TV-SAT, radio, bathroom with toilet, refrigerator (on the floor), free WiFi in the lobby.



Villa Margaréta***

Villa is situated in the centre of Rajecské Teplice. The area of Villa Margaréta is surrounded by beautiful green garden. Accommodation capacity is 16 beds in 8 single and double rooms. Each room has bathroom with toilet, TV, phone, fridge and kitchenette. Meals are served in restaurant in hotel Malá Fatra.



Villa Flóra***

Villa ist situated in the nice surroundings in immediate vicinity of the spa's lake. The location of Villa provides the guests quiet privacy. Accommodation capacity is 15 beds. The rooms have TV-SAT, radio, telephone, kitchenette, bathroom with toilet. Meals are served in restaurant in hotel Malá Fatra (approximately 200 m) or in nice Fisherman's bastion (100 m). Free WiFi in the lobby.



RAJECKÉ TEPLICE SPA STAYS

Spa De Luxe

Initial and final medical examination, 3 treatments per day according to doctor's prescription, full board, final medical report.

Minimum stay is for 7 nights, recommended length of stay is 14 nights. Doctor choose from following procedures:

- 30 min. classic partial massage, 20 min. underwater massage, 20 min. reflex back massage, 30 min. manual lymphatic drainage
- 30 min. whirlpool + dry wrap, 20 min. bath tub Biarritz + dry wrap, 20 min. bubble bath + dry wrap, 20 min. carbonic bath tub + dry wrap
- 45 min. oxygenotherapy, 15 min. inhalation, 20 min. local mud wrap, 20 min. turf (peat pack)
- 60 min. Pilates, 20 min. individual rehabilitation, 20 min. magnet therapy, 15 min. contact-free electric treatment, 10 min. interference currents, 15 min. short wave diathermia, 10 min. ultrasound, 15 min. parafango, 15 min. paraffin
- Gas injections, bioptron, solux

Preventive spa

Initial and final medical examination, 2 treatments per day according to doctor's prescription, half board (breakfast and dinner).

Minimum stay is for 5 nights, recommended length of stay is 14 nights. Doctor choose from following procedures:

- 15 min. classic partial massage, 20 min. underwater massage, 20 min. reflex back massage
- 30 min. whirlpool + dry wrap, 20 min. bath tub Biarritz + dry wrap, 20 min. bubble bath + dry wrap, 20 min. carbonic bath tub + dry wrap
- 45 min. oxygenotherapy, 15 min. inhalation, 20 min. turf (peat pack)
- 60 min. Pilates, 20 min. individual rehabilitation, 20 min. magnet therapy, 15 min. contact-free electric treatment, 10 min. interference currents, 15 min. short wave diathermia, 10 min. ultrasound, 15 min. parafango, 15 min. paraffin
- Gas injections, bioptron, solux

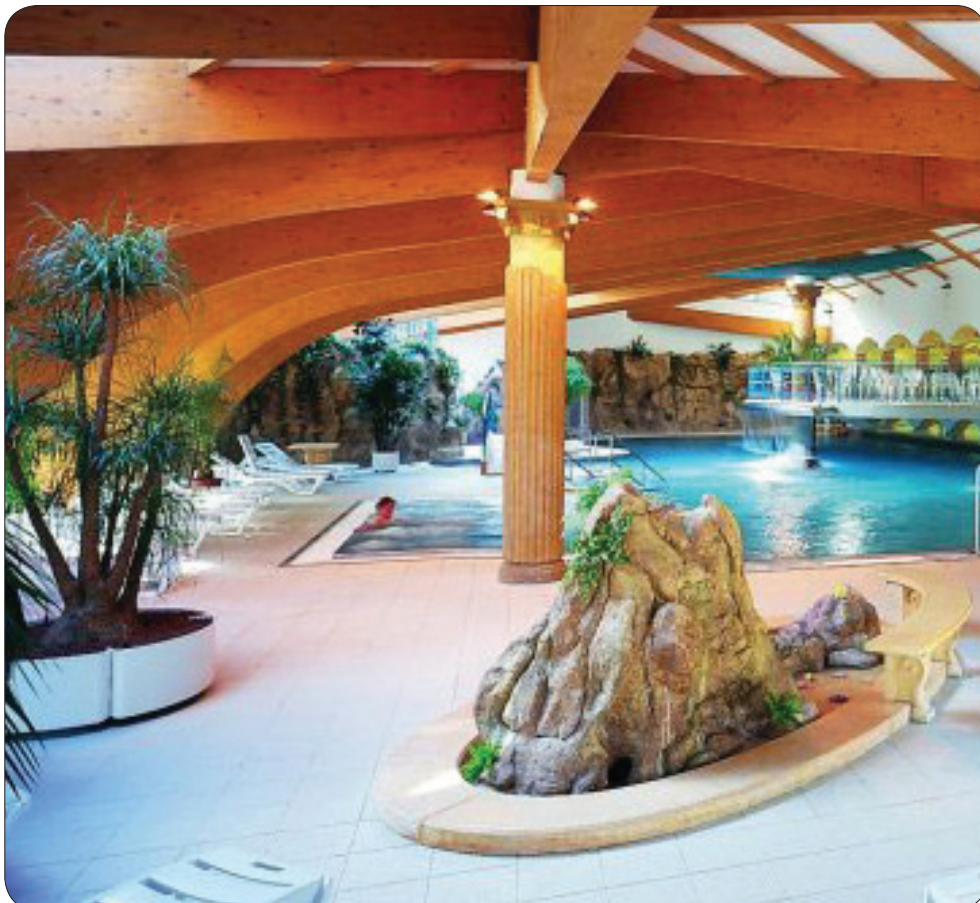


RAJECKÉ TEPLICE SPA STAYS

Relax Exclusive

Relaxation procedures, half board (breakfast and dinner), daily fresh fruit bowl. Minimum length of stay is 2 night, maximum length is 8 nights. Procedures depend on length of stay:

- 2 nights: 1 x 30 min. aromatherapeutic oil massage, 1 x 45 min. full-body exclusive massage, 1 x vibrosauna, 1 x carbonic bath tub
 - 3 nights: 1 x 30 min. aromatherapeutic oil massage, 1 x 45 min. full-body exclusive massage, 1 x vibrosauna, 1 x carbonic bath tub, 1 x 30 min. device lymphatic drainage, 1 x 30 min. reflex feet massage
 - 4 nights: 1 x 30 min. aromatherapeutic oil massage, 1 x 45 min. full-body exclusive massage, 1 x vibrosauna, 2 x carbonic bath tub, 1 x 30 min. device lymphatic drainage, 1 x 30 min. oxygen mesotherapy for face and décolletage, 1 x oxygenotherapy
 - 5 nights: 1 x 30 min. aromatherapeutic oil massage, 1 x 45 min. full-body exclusive massage, 2 x vibrosauna, 2 x carbonic bath tub, 1 x 30 min. device lymphatic drainage, 1 x 30 min. oxygen mesotherapy for face and décolletage, 1 x oxygenotherapy, 1 x 30 min. anti-stress facial massage
 - 6 nights: 1 x 30 min. aromatherapeutic oil massage, 2 x 45 min. full-body exclusive massage, 2 x vibrosauna, 2 x carbonic bath tub, 1 x 30 min. device lymphatic drainage, 1 x 30 min. oxygen mesotherapy for face and décolletage, 2 x oxygenotherapy, 1 x 30 min. anti-stress facial massage
 - *7 nights: 1 x 30 min. aromatherapeutic oil massage, 2 x 45 min. full-body exclusive massage, 2 x vibrosauna, 2 x carbonic bath tub, 1 x 30 min. device lymphatic drainage, 2 x 30 min. oxygen mesotherapy for face and décolletage, 2 x oxygenotherapy, 1 x 30 min. anti-stress facial massage, 1 x 20 min. underwater massage
 - *8 nights: 1 x 30 min. aromatherapeutic oil massage, 2 x 45 min. full-body exclusive massage, 3 x vibrosauna, 2 x carbonic bath tub, 1 x 30 min. device lymphatic drainage, 2 x 30 min. oxygen mesotherapy for face and décolletage, 3 x oxygenotherapy, 1 x 30 min. anti-stress facial massage, 1 x 20 min. underwater massage
- * 7 and 8 nights: 1 x partial mud pack free of charge**



RAJECKÉ TEPLICE SPA RATES 2015

APHRODITE PALACE****

Room (EUR)	SPA DE LUXE	PREVENTIVE SPA	RELAX EXCLUSIVE	ACCOMMODATION WITH BREAKFAST
Single Standard	137	114	127	80
Double Standard	214	168	194	100
Single Comfort	162	139	152	105
Double Comfort	244	198	224	130
Suite Comfort	274	228	254	160
Single Superior	177	154	167	120
Double Superior	284	238	264	170
Single De Luxe	177	154	167	120
Double De Luxe	294	248	274	180
Suite De Luxe	349	303	329	235
Extra bed	92	69	82	35

All year around:

07.04. - 24.12.2015

APHRODITE****

Room (EUR)	SPA DE LUXE	PREVENTIVE SPA	RELAX EXCLUSIVE	ACCOMMODATION WITH BREAKFAST
Single Comfort	147	124	137	90
Double Comfort	219	173	199	105
Double Superior	212	189	202	155
Suite	284	238	264	170
Extra bed	92	69	82	35

All year around:

07.04. - 24.12.2015

VILLA MARGARÉTA***

Room (EUR)	SPA DE LUXE	PREVENTIVE SPA	RELAX EXCLUSIVE	ACCOMMODATION WITH BREAKFAST
Double Comfort	181	135	161	67
Suite	195	149	175	81
Extra bed	72	49	62	15

All year around:

07.04. - 24.12.2015

RAJECKÉ TEPLICE SPA RATES 2015

MALÁ FATRA***

Room (EUR)	SPA DE LUXE	PREVENTIVE SPA	RELAX EXCLUSIVE	ACCOMMODATION WITH BREAKFAST
Single Comfort	92	69	82	35
Double Comfort	181	135	161	67
Extra bed	72	49	62	15

All year around:

07.04. - 24.12.2015

VILLA FLÓRA***

Room (EUR)	SPA DE LUXE	PREVENTIVE SPA	RELAX EXCLUSIVE	ACCOMMODATION WITH BREAKFAST
Single Comfort	92	69	82	35
Double Comfort	181	135	161	67
Suite	195	149	175	81
Extra bed	72	49	62	15

All year around:

07.04. - 24.12.2015

LAURA**

Room (EUR)	SPA DE LUXE	PREVENTIVE SPA	RELAX EXCLUSIVE	ACCOMMODATION WITH BREAKFAST
Single Comfort	90	67	80	33
Double Comfort	171	125	151	57
Double Lux	184	138	164	70
Extra bed	72	49	62	15

Season:

01.06. - 30.09.2015

BOJNICE SPA

Bojnice Spa lies in the very heart of Slovakia. It is a charming and peaceful spa resort near Bojnice castle that, thanks to a combination of its geographic location, climate and water composition, gives its guests ideal conditions for the natural curative treatment processes, regeneration, rest and tranquillity. Healing treatment procedures in Bojnice Spa is based on **natural healing hydrogen-carbon-sulphate, calcic-magnesium hypotonic thermal water** with the temperature from 28 to 52 °C which rises out of 9 springs with discharge of 40 litres per second from the depth of 1 200 - 1 500 meters. The thermal water improves metabolism and immunologic reactions in cells, function of issues, oxygen supply and thus the general health condition. The healing water positively influence on vegetative nervous system, particularly on its parasympathetic part.



BOJNICE SPA FACILITIES

Spa House Lysec

Newly built spa house with stylish furnishing offers accommodation in 135 double rooms and suites, each equipped with comfortable furniture, bathroom, TV-SAT, telephone, fridge, safe, Internet. Spacious canteen offer various meals and café with summer terrace enables a picturesque park view. Spa house Lysec is connected with Spa house Mier by a passage. Complete balneotherapy procedures are provided in the spa house.



Spa House Mier

Located in central part of the spa. Spa house building is reconstructed cultural monument from 16th century. Spa house Mier offers accommodation in 83 single and double rooms with bathroom, TV-SAT, telephone, fridge. Spa house canteen provides various meals including dietary meals. Sweet shop, library and chapel are located in the spa house as well. Complete balneotherapy procedures are provided in the spa house.



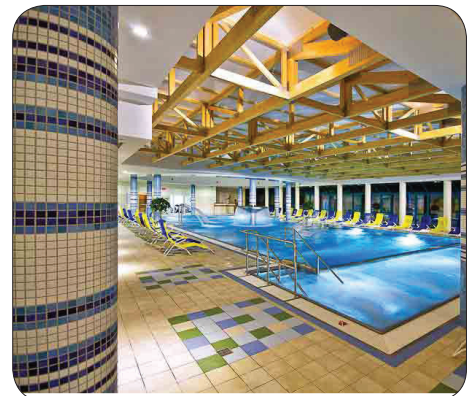
Spa House Baník

Lies in the tranquil part of the spa. Spa house Baník offers accommodation in 104 single and double rooms with bathroom, TV-SAT, telephone, fridge and balcony. Spa house canteen provides various meals including dietary meals. Café, library, social room and snack bar are located in the spa house as well. Complete balneotherapy procedures are provided in the spa house.



Wellness - Sauna World

Situated in the Spa House Mier in the Relaxation Center. You can choose from rich offer of classical and reflexive massages, lava stone massages, manual lymphodrainage, anticelulitide, vacuum massage - banking, thai massage, antimigraine and sport massages as well. Salt bath with the same positive effects of bathing in the sea and herbal bath that positively impacts respiratory diseases and rheumatic conditions are ideal for relaxation and rest.



BOJNICE SPA STAYS

Classic stay

Stay for minimum of 7 nights includes:

- full board (from second day of stay possibility to choose the meals)
- initial medical examination, in average 3 treatment procedures daily (procedures are based on client's health and chosen by doctor) - procedures are given from Monday to Saturday, possibility of consultation with doctor.

Dynamic stay

Stay for minimum of 7 nights includes:

- full board (from second day of stay possibility to choose the meals)
- initial medical examination, in average 3 treatment procedures daily (procedures are based on client's health and chosen by doctor) - procedures are given from Monday to Saturday, possibility of consultation with doctor
- free admission to Water world or outdoor swimming pool



BOJNICE SPA RATES 2015

Spa House	Room in EUR/person/ night	05.01. - 30.04.2015		01.05. - 31.10.2015		01.11. - 20.12.2015	
		CLASSIC	DYNAMIC	CLASSIC	DYNAMIC	CLASSIC	DYNAMIC
Banik	Single room	53	68	63	77	53	69
	Double room	45	56	51	65	45	58
Mier	Single room	53	68	63	77	53	69
	Double room	45	56	51	65	45	58
Lysec	Single room	69	84	79	93	69	85
	Double room	47	58	53	67	47	60

Surcharges:

Duble room single use - 19 EUR/night

Local tax - 1 EUR/person, night

Parking

BARDEJOV SPA

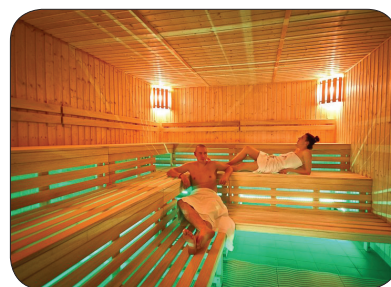
Bardejov Spa has a long tradition of curative stays and belongs to the most beautiful places you can visit in Slovakia. Spa is situated in the north-eastern part of Slovakia, near borders with Poland. The main treasure of the spa is the range of natural mineral springs. Only here visitors can find the Spa Colonnade with **8 different mineral springs**, which are all intended also for drinking. Bardejov Spa is situated 5 km from historic medieval town Bardejov, a UNESCO World Heritage Site.



BARDEJOV SPA FACILITIES

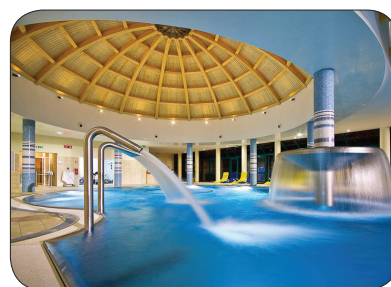
Beauty Studio

Beauty Studio offers the most advanced dermocosmetic equipment and products focused on beauty treatments. The connection of high technology, therapeutic-beautifying cosmetics Massada and professional staff will help you achieve the look you wish for and increase the feeling of satisfaction and inner harmony.



Wellness Spa

The world of relaxation and water fun is located in hotel Ozón. Wellness Spa includes relaxation swimming pool, whirlpool, children's swimming pool with attractions and various saunas. Directly at Wellness Spa you can enjoy different types of massages, fitness or solarium at Relax center.



BARDEJOV SPA HOTELS

Hotel Ozón ***

Hotel Ozón is the largest accommodation facility in Bardejovské Kúpele. In 2000, the hotel was completely reconstructed and now offers the services that satisfy even the demanding guests. offers accommodation in double rooms and single rooms and suites. The rooms are equipped with a fridge, radio, TV, and a telephone. Each bed has its own bathroom and majority of rooms have a balcony. The hotel is connected by the glass corridor with the Spa House - Balneotherapy, where the spa procedures are provided.



Hotel Astória ***

Hotel Astória is the historical dominant of Bardejov Spa, built in 1898 and the facade decoration and artistic decoration of the interior was carried out using the neo-renaissance and neo-baroque ornaments. Astória offers accommodation in single rooms, double rooms, and suites. The rooms are furnished with the furniture that harmonises with the historical style of the building. All rooms are equipped with a radio, TV, telephone, bathroom, and a fridge. Hotel Astória is also connected by the glass corridor with the spa house - Balneotherapy.



BARDEJOV SPA STAYS

Standard stay

Stay includes

- consultation with a doctor
- accomodation
- full board/halfboard
- 3 spa treatments per day, 3 drinking cures per day, 2 hours daily entrance to Wellness Spa - swimming pools

Minimum length is 6 nights.

Senior stay

Stay is valid for persons over 60 years. It includes:

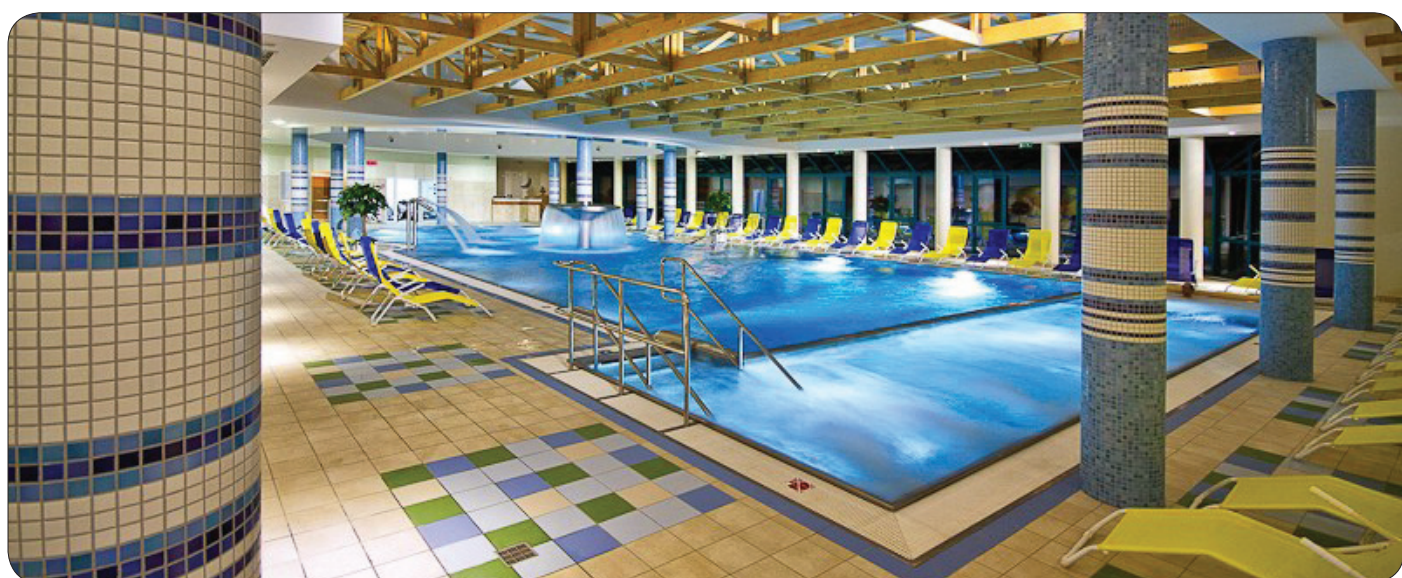
- consultation with a doctor
- accomodation
- full board/halfboard
- 3 spa treatments per day, 3 drinking cures per day, 2 hours daily entrance to Wellness Spa - swimming pools

Minimum length is 6 nights.

Wellness Relax

Relax stay includes certain number of spa treatments depending on the lenght of the stay (Minimum length is 2 nights). Price includes accomodation, full board/halfboard, daily entrance to Wellness Spa swimming pools and following treatments:

- 2 nights: 1 x classical massage, 1 x mineral bath, 1 x whirlpool, 2 x Wellness Spa - swimming pools
- 3 nights: 1 x classical massage, 2 x mineral bath, 1 x whirlpool, 1 x salt cave, 3 x Wellness Spa - swimming pools
- 4 nights: 2 x classical massage, 2 x mineral bath, 1 x whirlpool, 1 x salt cave, 1x paraffin wrap, 4 x Wellness Spa - swimming pools
- 5 nights: 2 x classical massage, 2 x mineral bath, 1 x whirlpool, 2 x salt cave, 1x paraffin wrap, 1 x body cleaner, 5 x Wellness Spa - swimming pools.
- 6 nights: 2 x classical massage, 3 x mineral bath, 1 x whirlpool, 2 x salt cave, 1x paraffin wrap, 1 x body cleaner, 1 x salt bath, 6 x Wellness Spa - swimming pools.



BARDEJOV SPA RATES 2015

Hotel	Room in EUR person/ night	STANDARD STAY		WELLNESS RELAX		SENIOR STAY		ACCOMMODATION WITH BREAKFAST
		Season	Out	Season	Out	Season	Out	All year round
OZÓN***	Single Standard	80	72	85	77	76	68	63
	Double Standard	69	63	74	68	64	58	80
	Suite Standard (single use)	91	82	96	87	87	78	112
	Suite Standard (2 persons)	76	69	81	74	71	64	112
***+	Single Superior	91	82	96	87	87	78	78
***+	Double Superior	76	69	81	74	71	64	100
***+	Suite Superior (single use)	100	92	105	97	96	88	137
***+	Suite Superior (2 persons)	84	76	89	81	79	71	137
	Extra bed (Apartment)	61	55	65	59	57	51	45
ASTÓRIA***	Single Standard	80	72	85	77	76	68	63
	Double Standard	69	63	74	68	64	58	80
***+	Single Superior	91	82	96	87	87	78	78
***+	Double Superior	76	69	81	74	71	64	100
***+	Suite Superior (single use)	100	92	105	97	96	88	137
***+	Suite Superior (2 persons)	84	76	89	81	79	71	137
	Extra bed (Apartment)	61	55	65	59	57	51	45

Season:

01.04. - 31.10.2015

27.12.2015 - 02.01.2016

Out of season:

31.10. - 19.12.2015

Extra charge:

Local tax 1 EUR/person,night

Parking

Deduction:

- 5 EUR/person, night if half board only